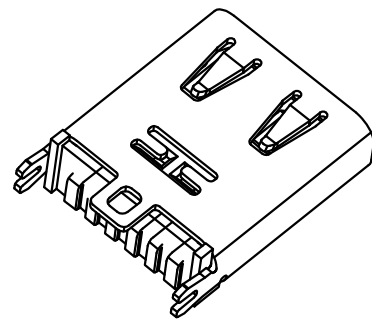
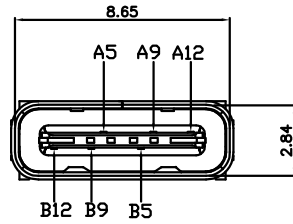
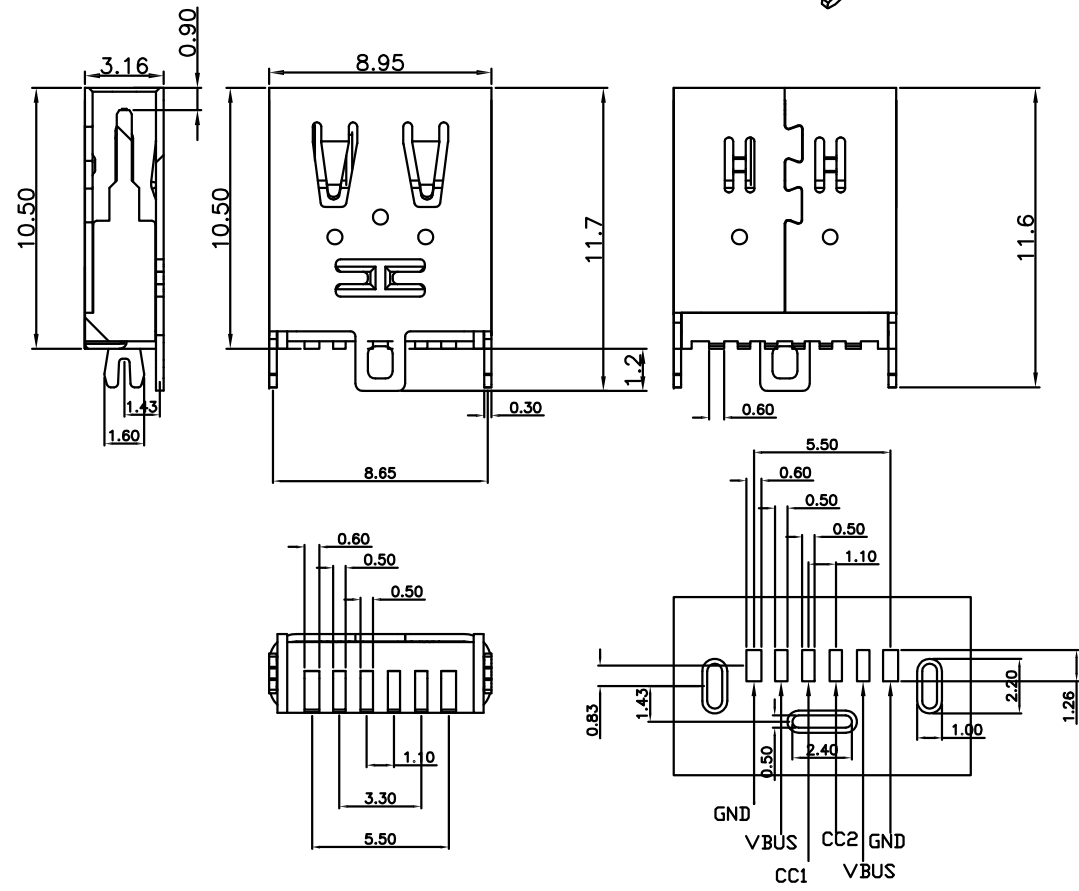


|      |         |       |
|------|---------|-------|
| REV. | ECN.NO. | APPD. |
| A    | /       | /     |



|     |             |
|-----|-------------|
| B12 | GND         |
| B9  | VBUS        |
| B5  | CC2         |
| A5  | CC1         |
| A9  | VBUS        |
| A12 | GND         |
| PIN | SIGNAL NAME |

NOTES:  
 1.MATERIAL:  
 1.1 Housing:thermoplastic plastics  
 1.2 terminals:Copper Alloy  
 Gold plated in contact area:  
 Tin plated in termination  
 Nickel Plated overall  
 1.3 Shell:Steel&Copper Alloy  
 Nickel/Au Plated overall  
 2.characteristics:  
 2.1 Rating Voltage : 30V AC.  
 2.2 Rating Current:  
 5A for Vbus PIN;1.25A for Vconn PIN  
 2.3 Contact Resistance:40 mΩ MAX.  
 2.4 Insulation Resistance:100 MΩ MIN.  
 2.5 Withstanding Voltage:AC 100V  
 2.6 Mating force: 5~20N MAX  
 2.7 Extraction force:8~20N Min  
 2.8 Life test:10000Cycles MIN.  
 2.9 Temperature Range: -30℃~+80℃.  
 The product must be compliance ROHS



U572-451X-XXX018  
 B: 不锈钢镀镍  
 G: 镀半金G/Fu  
 1: 黑色  
 6: LCP

|                                      |             |  |                      |       |       |      |
|--------------------------------------|-------------|--|----------------------|-------|-------|------|
| TOLERANCE UNLESS OTHERWISE SPECIFIED |             | <b>FLW 深圳市华联威电子科技有限公司</b>                    |                      |       |       |      |
| .XXX ±0.10                           |             | HUA LIAN WEI TECHNOLOGY ELECTRONICS CO.,LTD. |                      |       |       |      |
| .XX ±0.20                            |             | .X* ±3*                                      |                      |       |       |      |
| .X ±0.30                             |             | .XX* ±2*                                     |                      |       |       |      |
| APPROVED                             |             | PART NAME:                                   | TYPE C 6P立贴双弹高度10.50 |       |       |      |
| CHECKED                              |             | PART No:                                     | U572-451B-G61018     |       |       | C    |
| DRAWN                                | weihong     | PROJECTION:                                  | UNIT:                | SCALE | SHEET | REV. |
| DATE                                 | 2021. 9. 23 |  | mm                   | 1:1   | 10F1  | A    |