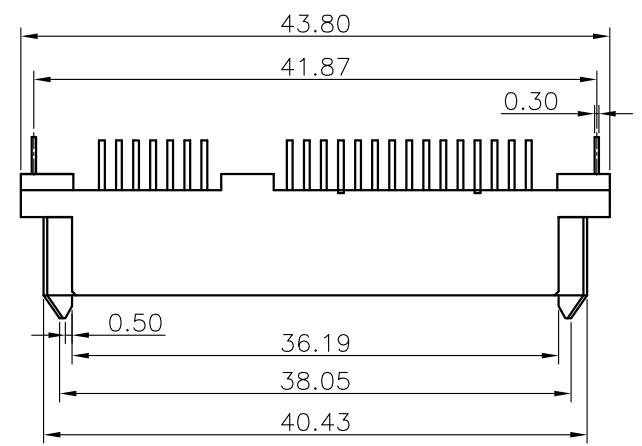


REV.	ECN.NO.	APPD.
A	/	/

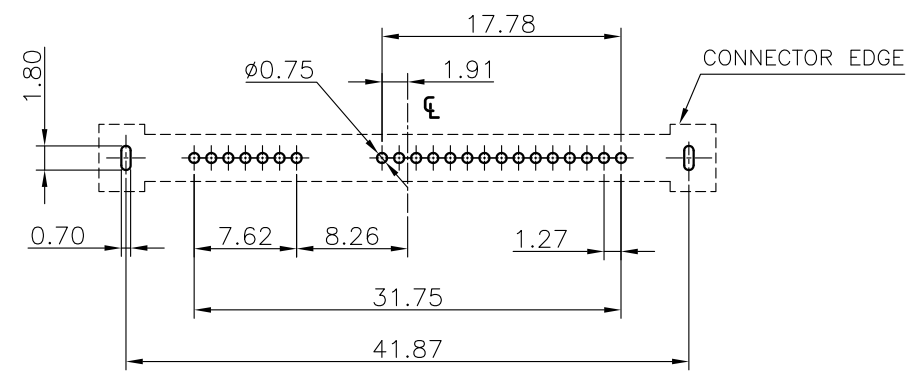
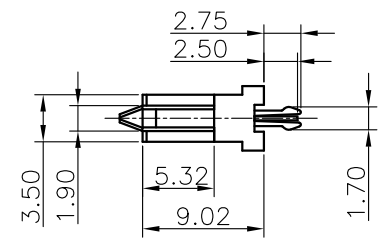
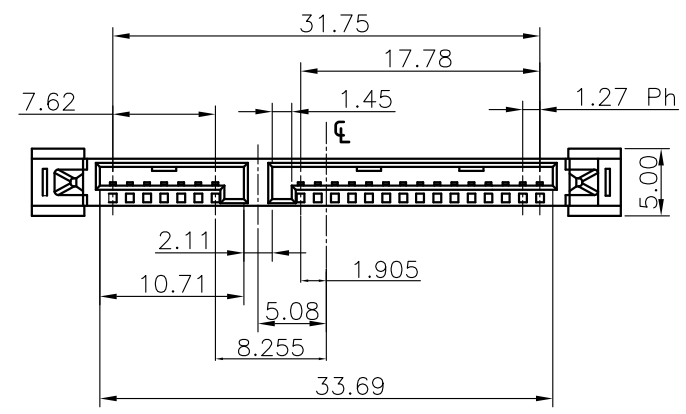


NOTE:

- MATERIAL:  
HOUSING: LCP WITH 30% GF, UL 94V-0, BLACK COLOR.  
CONTACTS: PHOSPHOR BRONZE.  
BORAD LOCK: COPPER ALLOY.
- FINISH:  
CONTACTS: GOLD FALSH PLATED ON CONTACT AREA, [100μ"] MIN..  
BRIGHT-TIN ON SOLDER TAIL, WITH ENTIRE CONTACT UNDERPLATED [50μ"] MIN.. NICKEL.  
BORAD LOCK: [100μ"] MIN. TIN OVER[50μ"]MIN. NICKEL PLATED.
- PART NUMBER DESCRIPTION :

# ST21-0440-G618

G: 镀半金G/Fu"  
1: 黑色  
6: LCP



RECOMMEND PCB LAYOUT (T=1.6)  
PCB TOLERANCE: ±0.05

TOLERANCE UNLESS OTHERWISE SPECIFIED		FLW 深圳市华联威电子科技有限公司			
.XXX ±0.10	.X' ±3'	HUA LIAN WEI TECHNOLOGY ELECTRONICS CO;LTD.			
.XX ±0.20	.XX' ±2'				
.X ±0.30					
APPROVED		PART NAME:	SATA 7+15P 长体单排180度DIP PC2.75 L=2.50有凸鱼叉脚		
CHECKED		PART No:	ST21-0440-G618	C	
DRAWN	weihong	PROJECTION:	UNIT:	SCALE	SHEET
DATE	2021.9.23		mm	1:1	10F1
					REV. A