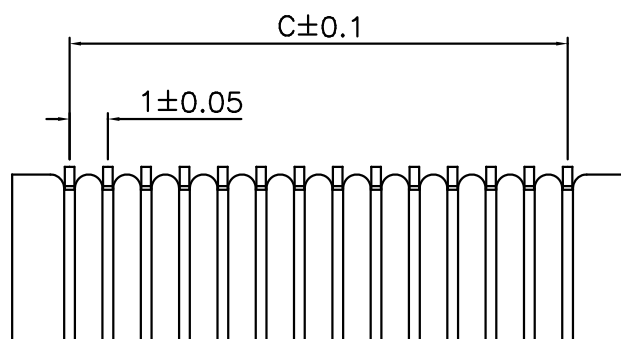
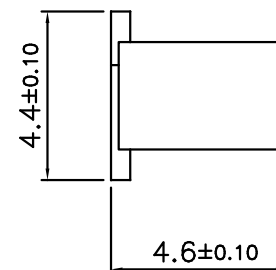
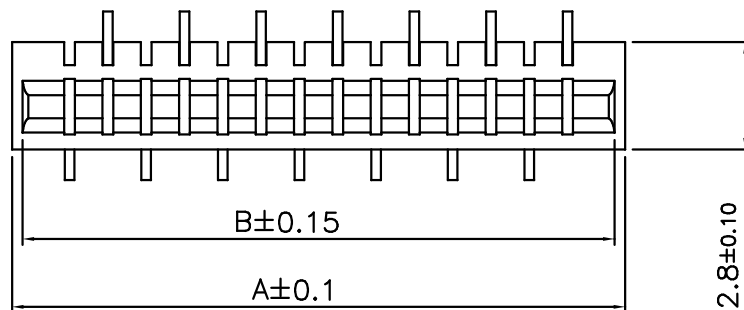


REV.	ECN.NO.	APPD.
A	/	pcy
A1	/	LJF



技术要求:

每板间距: 1.0mm

额定电压: 50V/250V AC、DC

额定电流: 0.5A

绝缘电阻: 50MΩ MIN

接触电阻: 30mΩ MAX

工作温度: -20°C+85°C

线性尺寸的一般公差按±0.2

孔位	A	B	C	孔位	A	B	C
4	6	5.15	3	23	25	24.15	22
5	7	6.15	4	24	26	25.15	23
6	8	7.15	5	25	27	26.15	24
7	9	8.15	6	26	28	27.15	25
8	10	9.15	7	27	29	28.15	26
9	11	10.15	8	28	30	29.15	27
10	12	11.15	9	29	31	30.15	28
11	13	12.15	10	30	32	31.15	29
12	14	13.15	11	31	33	32.15	30
13	15	14.15	12	32	34	33.15	31
14	16	15.15	13	33	35	34.15	32
15	17	16.15	14	34	36	35.15	33
16	18	17.15	15	35	37	36.15	34
17	19	18.15	16	36	38	37.15	35
18	20	19.15	17	37	39	38.15	36
19	21	20.15	18	38	40	39.15	37
20	22	21.15	19	39	41	40.15	38
21	23	22.15	20	40	42	41.15	39
22	24	23.15	21				

TOLERANCE UNLESS OTHERWISE SPECIFIED		HUA LIAN WEI TECHNOLOGY ELECTRONICS CO.;LTD.				
.XXX ±0.10	.XX ±0.20	HUA LIAN WEI TECHNOLOGY ELECTRONICS CO.;LTD.				
.X ±0.30	.X* ±3'	HUA LIAN WEI TECHNOLOGY ELECTRONICS CO.;LTD.				
	.XX* ±2'	HUA LIAN WEI TECHNOLOGY ELECTRONICS CO.;LTD.				
APPROVED		PART NAME:	1.0-A-PB双面接立贴			
CHECKED		PART No:	215110-0108-G68			C
DRAWN	Lijinfeng	PROJECTION:	UNIT:	SCALE:	SHEET:	REV.
DATE	2021.08.03		mm	1:1	10F1	A1