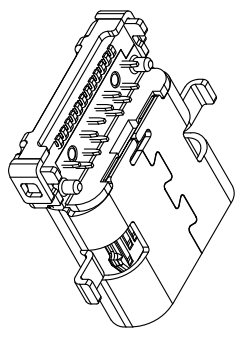
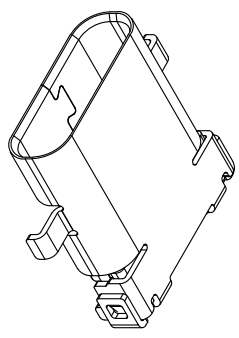
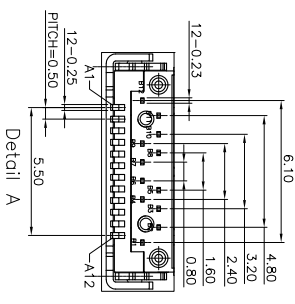
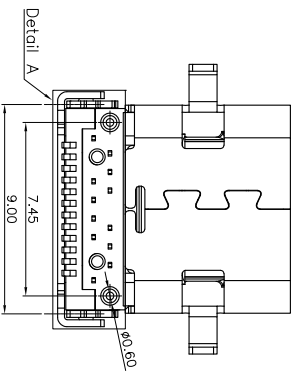
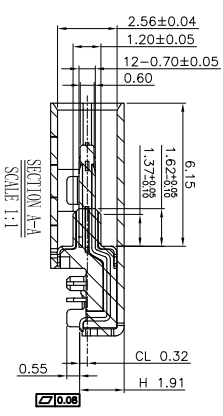
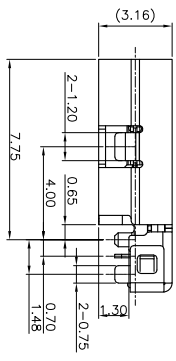
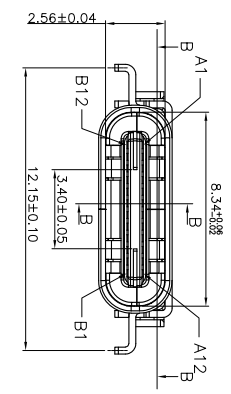
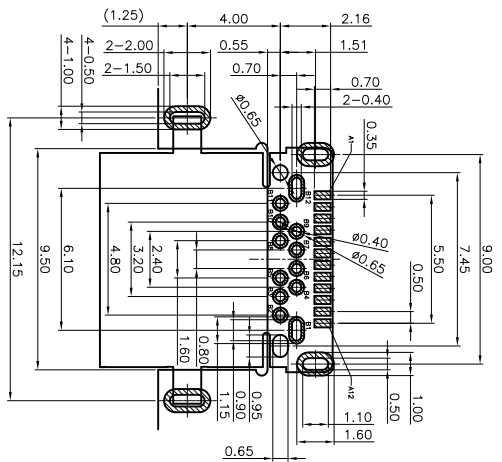
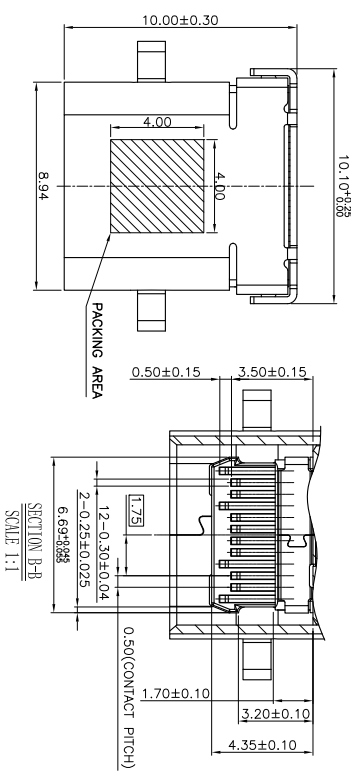


REV.	ECH. NO.	APPD.
A	EXXXXXXXXXXX	chenyiting

NOTES:

1. MATERIAL:
 - 1.1 Housing:thermoplastic plastics
 - 1.2 terminals:Copper Alloy
 - Gold plated in contact area:
 - Tin plated in termination
 - Nickel Plated overall
 - 1.3 Shell:Steel&Copper Alloy
 - Nickel/Au Plated overall
 2. characteristics:
 - 2.1 Rating Voltage : 30V AC.
 - 2.2 Rating Current:
 - 5A for Vbus PIN:1.25A for Vconn PIN
 - 2.3 Contact Resistance:40 mΩ MAX.
 - 2.4 Insulation Resistance:100 MΩ MIN.
 - 2.5 Withstanding Voltage:AC 100V
 - 2.6 Mating force: 5~20N MAX
 - 2.7 Extraction force:8~20N Min
 - 2.8 Life test:10000Cycles MIN.
 - 2.9 Temperature Range: -30℃~+80℃.
- The product must be compliance ROHS



Pin No	Symbol	Description	Pin No	Symbol	Description
A1	CR0	Ground return	B12	CR0	Ground return
A2	SR750	Signal Speed TX	B11	SR804	Signal Speed TX
A3	SR750	Signal Speed TX	B10	SR804	Signal Speed TX
A4	SR750	Signal Speed TX	B9	SR804	Signal Speed TX
A5	CR1	Ground return	B8	SR804	Signal Speed TX
A6	B11	Signal Speed TX	B7	SR804	Signal Speed TX
A7	B10	Signal Speed TX	B6	SR804	Signal Speed TX
A8	SR1	Standard test (SR)	B5	CR2	Ground return
A9	Vbus	Bus Power	B4	Vbus	Bus Power
A10	SR2	Standard test (SR)	B3	SR2	Standard test (SR)
A11	SR2	Standard test (SR)	B2	SR2	Standard test (SR)
A12	CR0	Ground return	B1	CR0	Ground return

HLW 深圳市华联威电子科技有限公司
HUA LIAN WEI TECHNOLOGY ELECTRONICS CO.,LTD.

TOLERANCE UNLESS OTHERWISE SPECIFIED	XXX ±0.10 XX ±0.20 X ±0.30	X ±3 XX ±2
PART NAME:	TYPE C 24P半插半贴片板1.3有柱	
PART NO.:	U521-111B-G61018	
PROJECTION:	UNIT:	SCALE
DATE	2023.06.02	10F1

P/N:	DIM A	DIM B	DIM C
FUCR-247X-09XX	10.00	7.75	6.15
FUCR-247X-18XX	8.65	6.40	4.80

