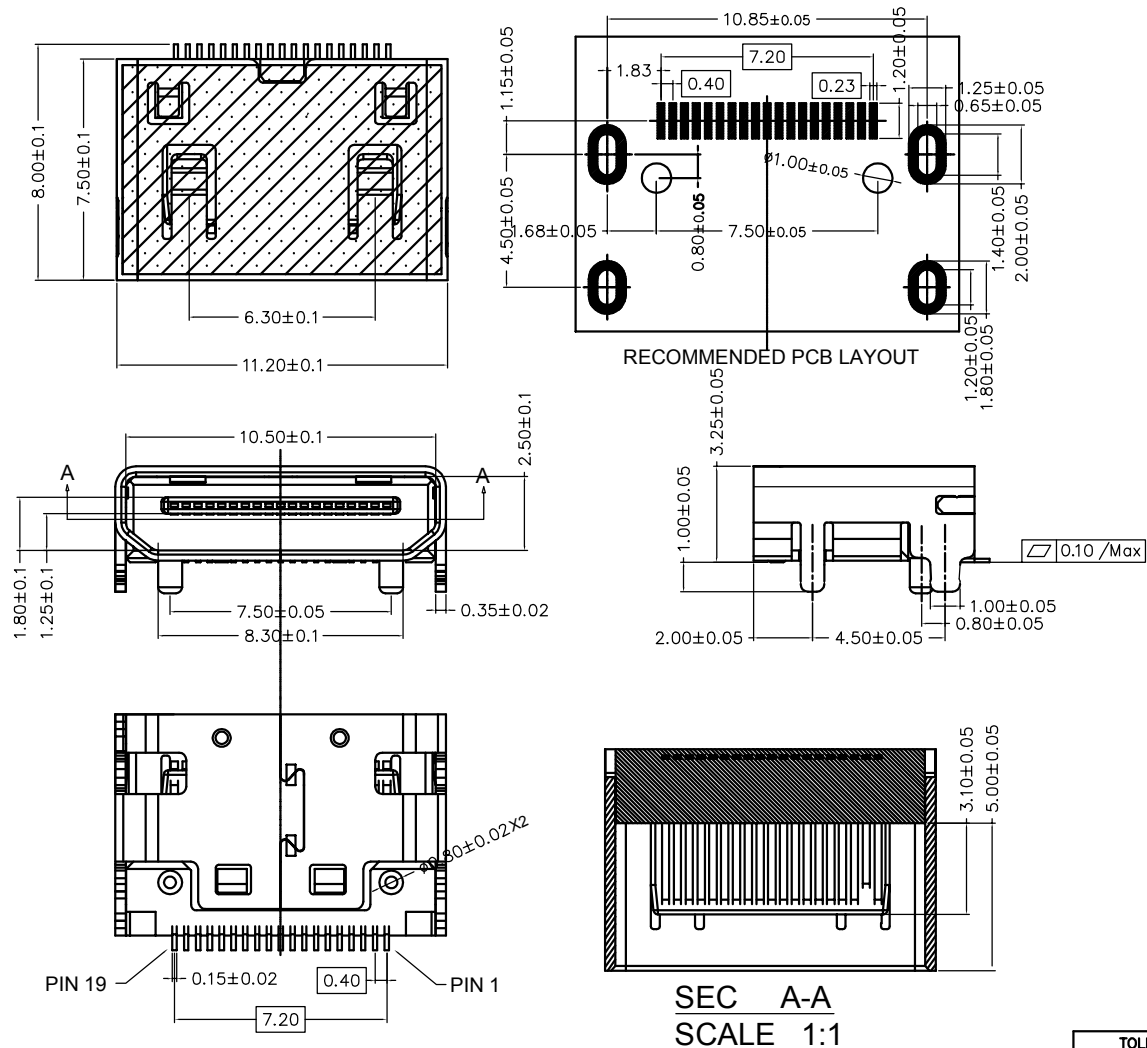


REV.	ECN.NO.	APPD.
A0	/	/
A1	/	/



- NOTES:
- MATERIAL:
    - Housing: thermoplastic plastics
    - terminals: Copper Alloy  
Gold plated in contact area;  
Tin plated in termination  
Nickel Plated overall
    - Shell: Steel & Copper Alloy  
Nickel/Au Plated overall
  - ELECTRICAL CHARACTERISTICS:
    - Rating Current : 0.5 Ampere
    - Rating Voltage : 40 V Max
    - Contact Resistance: 30 Milli ohms
    - Insulation Resistance: 100 Mega ohms Min.
  - MECHANICAL CHARACTERISTICS:
    - Connector Mating force: 4.5kg MAX
    - Connector Unmating force: 1.0Kg min
    - Durability: 10000 Cycles.
  - ENVIRONMENT CHARACTERISTICS:
    - Operating temperature: -20°C to +85°C
    - Storage temperature: -20°C to +65°C

HD22-3115-G61038

5: 铜壳镀镍      3: 载带冷封  
6: 半金G/Fu      1: 黑色

TOLERANCE UNLESS OTHERWISE SPECIFIED		FLW 深圳市华联威电子科技有限公司			
.XXX ±0.10	.XX ±0.20	.X ±0.30	.X' ±3'	HUA LIAN WEI TECHNOLOGY ELECTRONICS CO.;LTD.	
.X ±0.30		.XX' ±2'			
APPROVED		PART NAME:	HDMI MINI 19P/F 插脚		
CHECKED		PART No:	HD22-3115-G61038	c	
DRAWN	chenyiting	PROJECTION:	UNIT:	SCALE	SHEET
DATE	2022.04.17		mm	1:1	10F1
					REV. A1