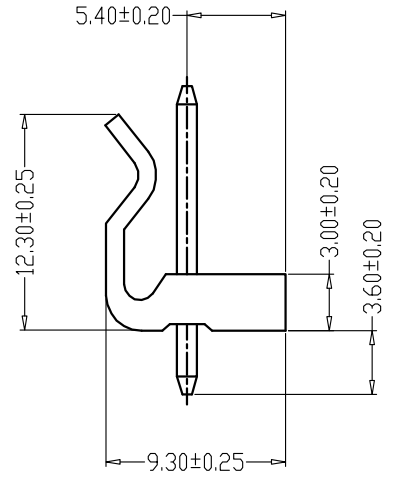
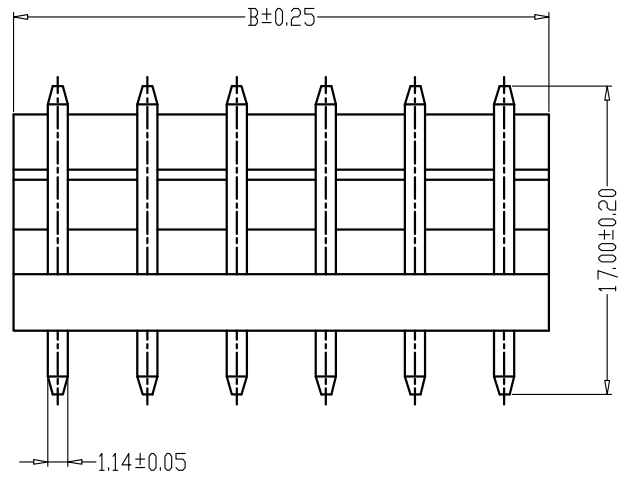


REV.	ECN.NO.	APPD.
A	/	/

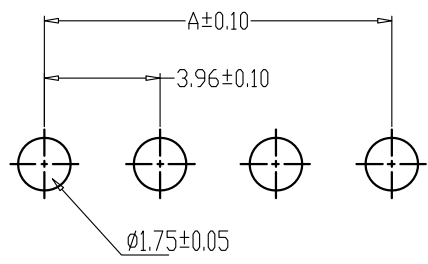
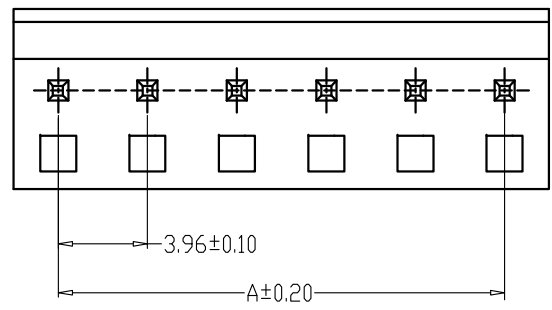
技术指标 (Technical Index) :

1. 工作温度 (Temperature range) : -25°C - 85°C .
2. 额定电压 (Rated voltage) : 250V DC/AC (rms)
3. 额定电流 (Rated current) : 5A AC, DC
4. 接触阻抗 (CONTACT Resistance) : $\leq 25\text{M}\Omega$
5. 耐压值 (Withstanding voltage) : 1500V AC/minute
6. 绝缘阻抗 (Insulation resistance) $\geq 1000\text{M}\Omega$



216104-1166-G22017

- G: 镀锡
- 1: 吸塑盒
- 2: PBT
- 2: 白色



PCB LAYOUT

编号	尺寸 (mm)	
	A	B
02	3.96	7.92
03	7.92	11.88
04	11.88	15.84
05	15.84	19.80
06	19.80	23.76
07	23.76	27.72
08	27.72	31.68
09	31.68	35.64
10	35.64	39.60
11	39.60	43.56
12	43.56	47.52

TOLERANCE UNLESS OTHERWISE SPECIFIED		FLW 深圳市华联威电子科技有限公司			
		HUA LIAN WEI TECHNOLOGY ELECTRONICS CO;LTD.			
.XXX ±0.10 .XX ±0.20 .X ±0.30		.X' ±3' .XX' ±2'		PART NAME: 针座间距3.96直插直针	
APPROVED		PART No: 216104-1166-G22017		C	
CHECKED		PROJECTION:		UNIT: mm	SCALE: 1:1
DRAWN	chenyiting	DATE: 2023.04.20		SHEET: 10F1	REV: A